

# OpenEMR Reference Architecture



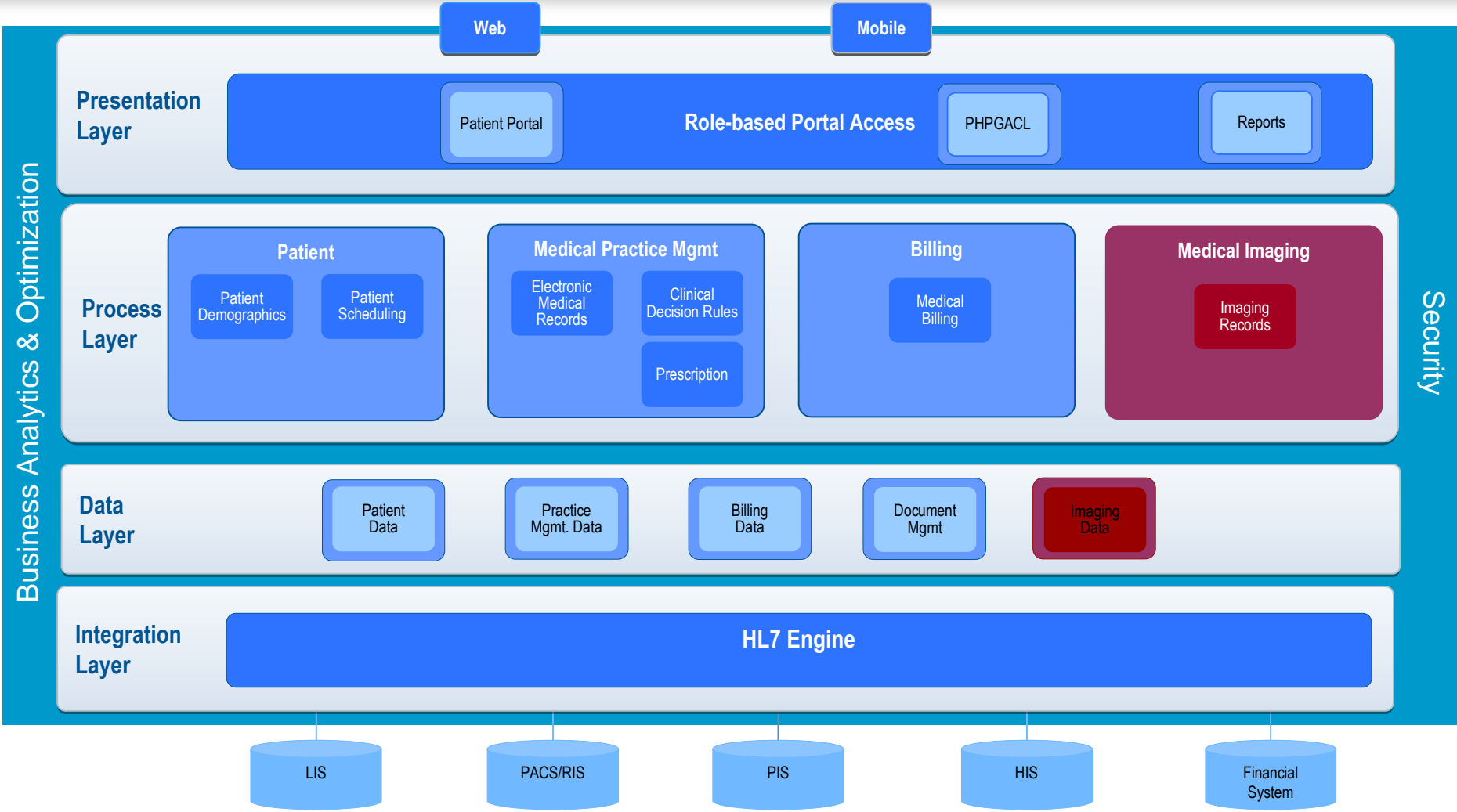
Providers



Hospitals



Regional Clinics



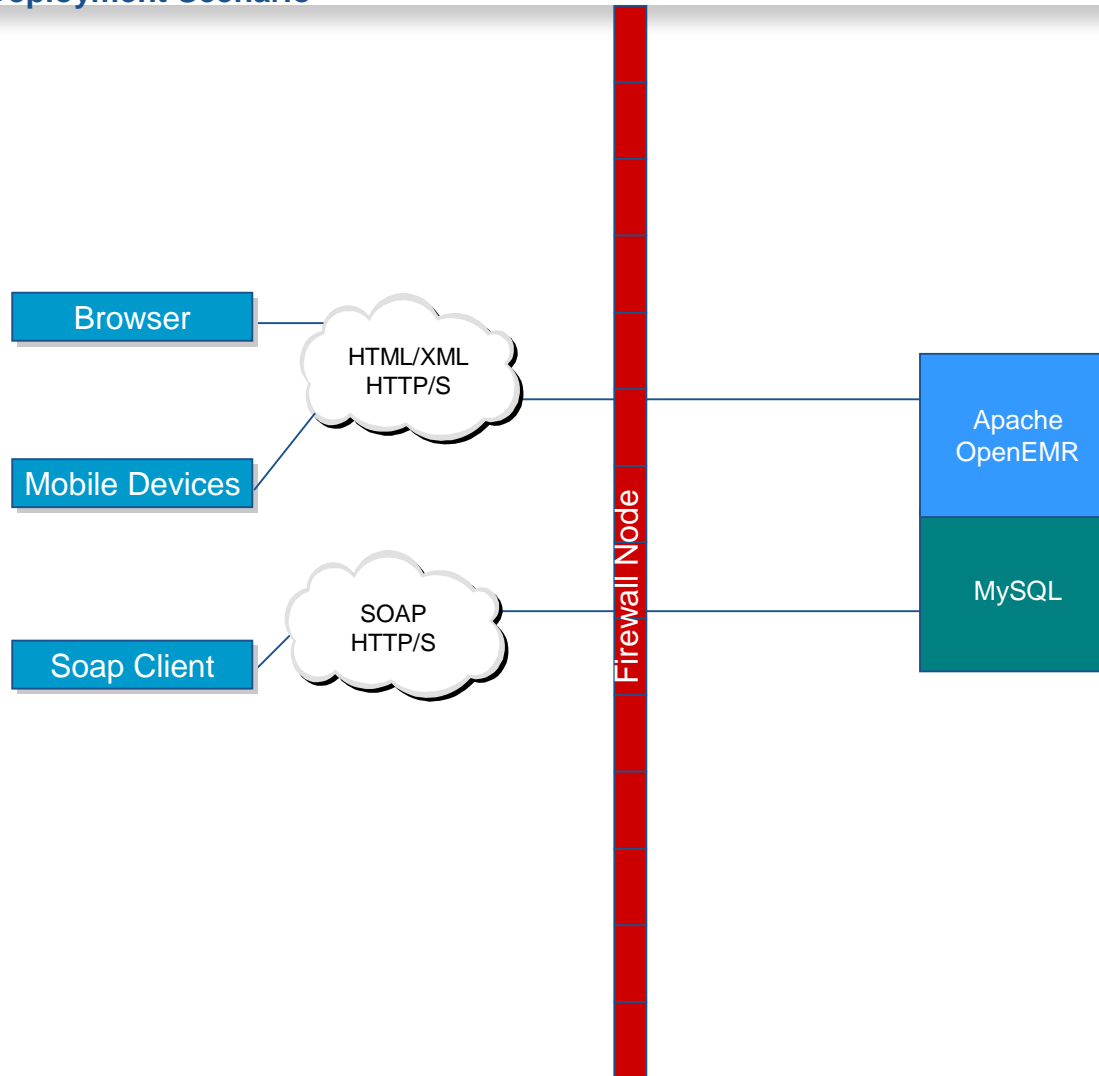
**LEGEND:**

Other Systems

Not currently in OpenEMR

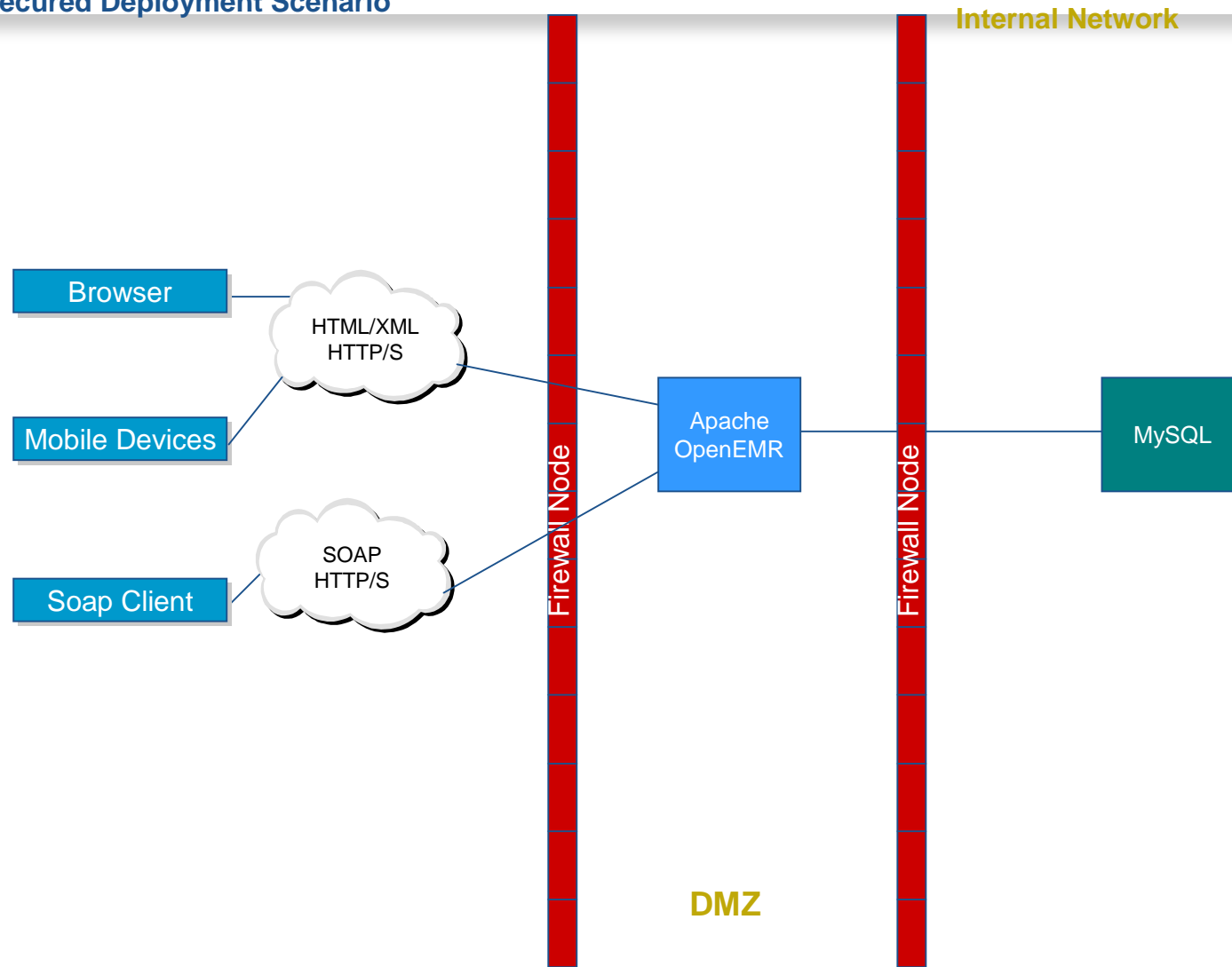
# Operational Model – System Topology View

## Typical Deployment Scenario



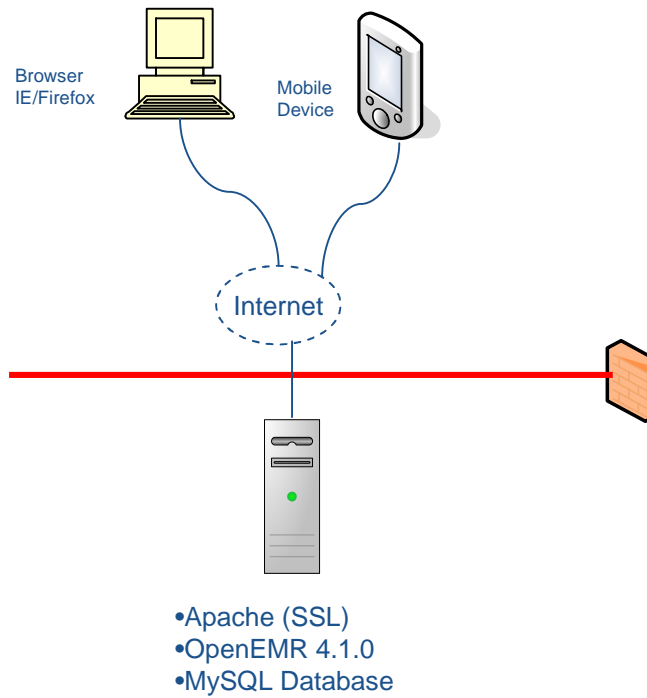
# Operational Model – System Topology View

More Secured Deployment Scenario



# Operational Model – Software View

## Typical Deployment Scenario



# Operational Model – Software View

## More Secured Deployment Scenario

